



## 2023 DEMOGRAPHICS

1 Mile | 3 Miles | 5 Miles



### Population

5,669 | 21,859 | 35,202



### Daytime Population

5,787 | 15,414 | 21,967



### Median Household Income

\$55,670 | \$70,064 | \$71,550

# RETAIL FOR SALE

635 S. Truman Boulevard & 618 S. Adams Street | Festus, Missouri 63028

1.55 Acres | Sale Price: \$815,000

## PROPERTY DETAILS

Long time A+ corporate tenant of more than 20 years

Shares entry/exit drive with a Walmart that is in the top 5% of sales volumes in Missouri

Potential redevelopment opportunity

South Truman Boulevard - 14,117 VPD

**John Shuff**

314.785.7630

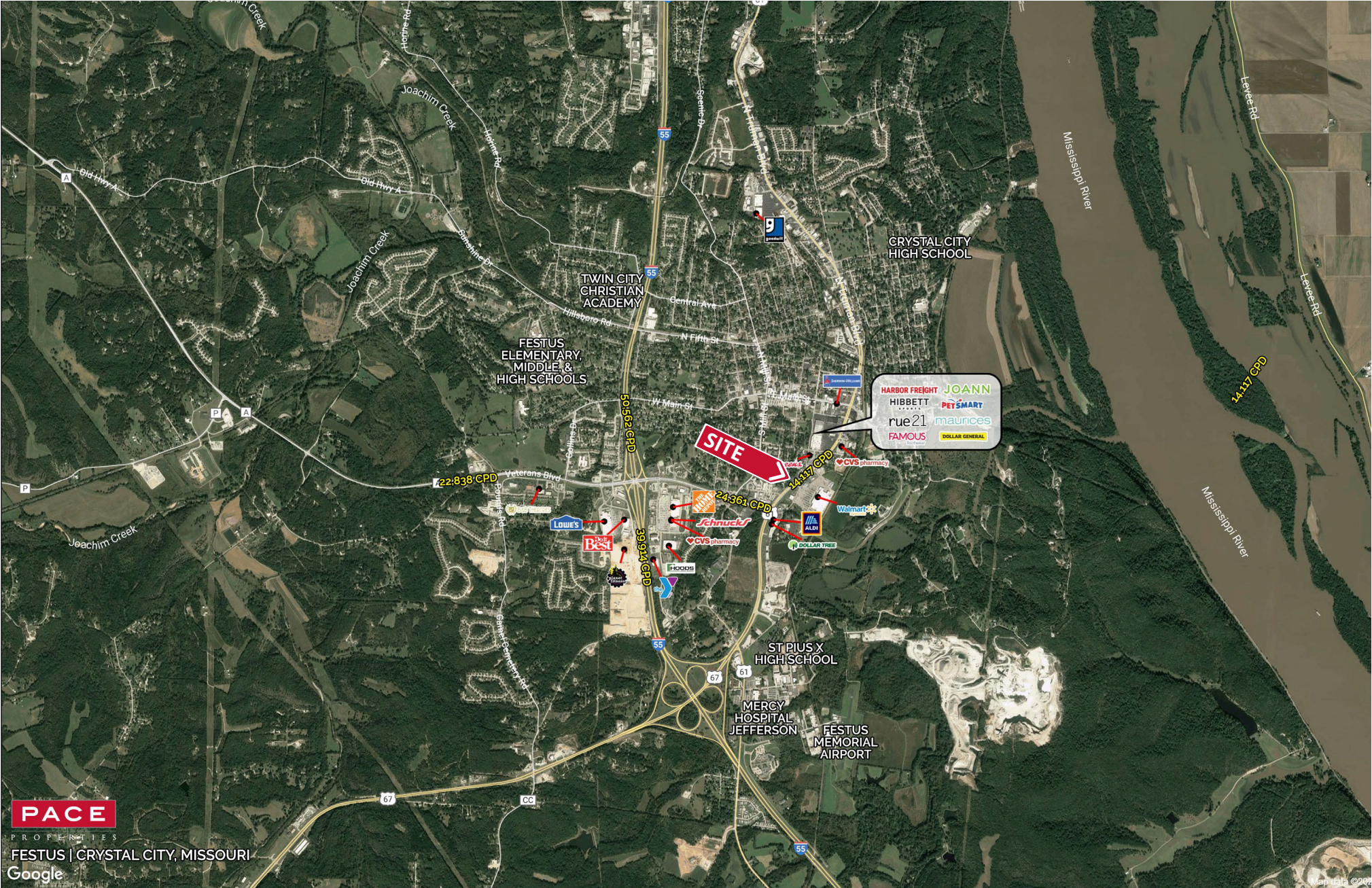
[jshuff@paceproperties.com](mailto:jshuff@paceproperties.com)

[PACEPROPERTIES.COM](http://PACEPROPERTIES.COM) | 314.968.9898

1401 South Brentwood Boulevard, Suite 900 | St. Louis, Missouri 63144

The information contained herein is not warranted, although it has been obtained from the owner/landlord of the subject property or from other sources that Pace Properties, Inc. deems reliable, and is subject to change without notice. Owner/landlord and Pace Properties, Inc. make no representations as to the environmental condition of the subject property and recommend tenant's independent investigation.

# Trade Area Aerial



PACEPROPERTIES.COM | 314.968.9898

1401 South Brentwood Boulevard, Suite 900 | St. Louis, Missouri 63144

The information contained herein is not warranted, although it has been obtained from the owner/landlord of the subject property or from other sources that Pace Properties, Inc. deems reliable, and is subject to change without notice. Owner/landlord and Pace Properties, Inc. make no representations as to the environmental condition of the subject property and recommend tenant's independent investigation.

# Zoomed Aerial

